

CERTIFICATE OF LOCATION OF GOVERNMENT CORNER

NORTHEAST GOV'T LOT 3 Corner of Section 21, Township 108, Range 42, 5TH P.M.

STATE OF MINNESOTA, County of MURRAY

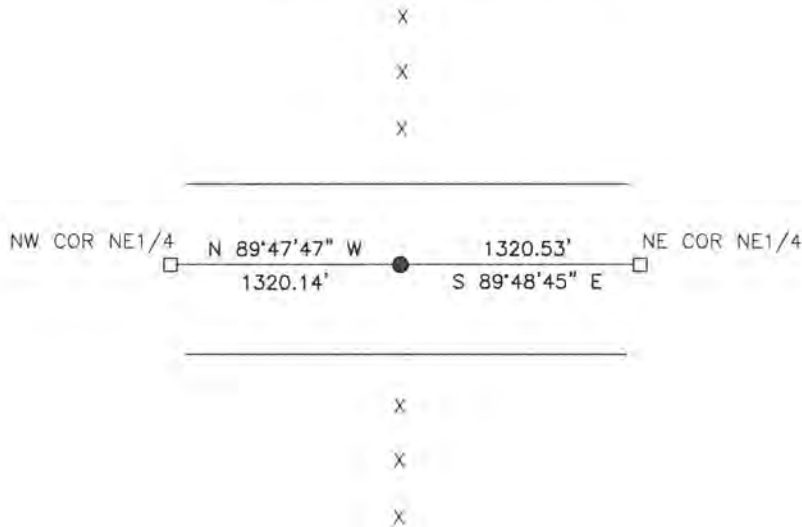
At the corner location shown on the sketch:

On 10/9/15 found a 1 1/4" pipe

left monument as found, lowered monument, removed monument (explain)

On _____ placed a _____

SKETCH OF REFERENCE TIES



Minnesota State Plane Coordinate
System Murray County Datum
NAD83 (1996)

N: 211166.227
E: 468012.890

Statement of evidence relative to this corner location is on back of page.

I hereby certify that this document and the data contained herein was prepared by me or under my direct supervision.

[Signature] 3-21-16
SIGNATURE DATE

Registration No. 50343

- Land Surveyor, Professional Engineer
 County Surveyor, County Engineer

OFFICE OF THE COUNTY RECORDER

County of MURRAY

I hereby certify that this document was filed in the Co. Recorders office at 11:00 A. on the 18TH day of OCTOBER A.D. 2016

County Recorder Evelyn C. Larson

By _____, Deputy

DOCUMENT NO. _____

Statement of Evidence

On July 11, 1861, L.G.W. Fletcher did the original subdivision of the township.

On June 22, 1999, Bolton & Menk, Inc. found an iron at the corner.

On March 10, 2000, Moseng Land Surveying found a 1 ¼ inch iron pipe at the corner.

On October 9, 2015, Bueltel-Moseng Land Surveying found a 1 ¼ inch iron pipe in the centerline of the road and in line with fence to the north and the south.